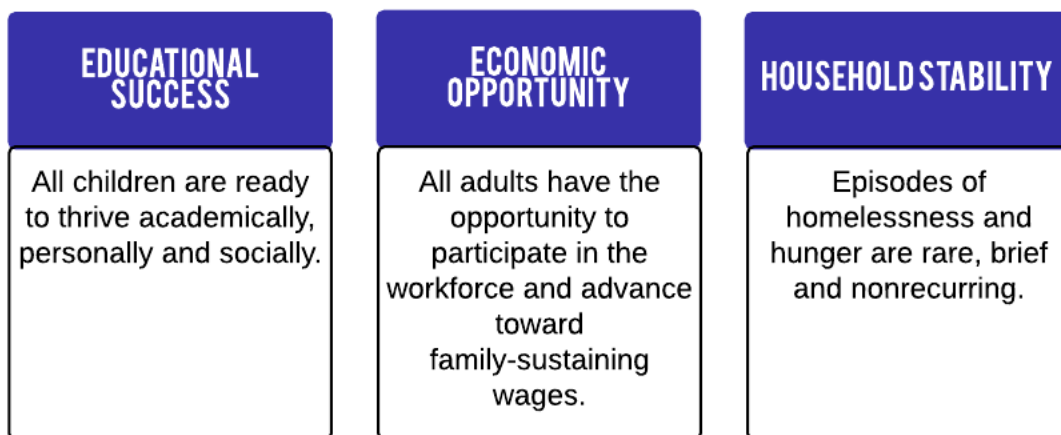
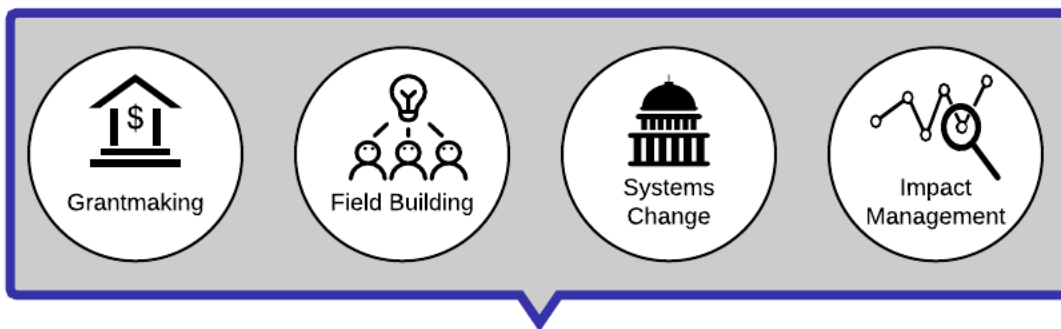


COMMUNITY IMPACT THEORY OF CHANGE



Disrupt the extent to which income, race or place predict economic and household stability as well as educational success.

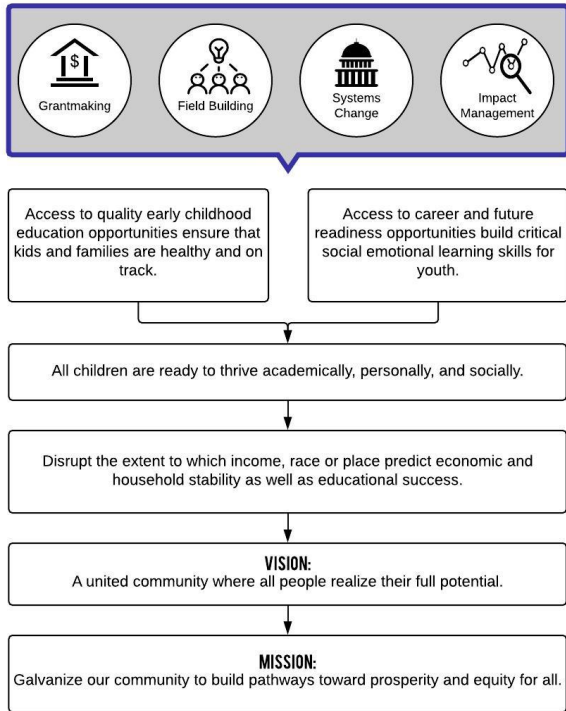


VISION:
A united community where all people realize their full potential.

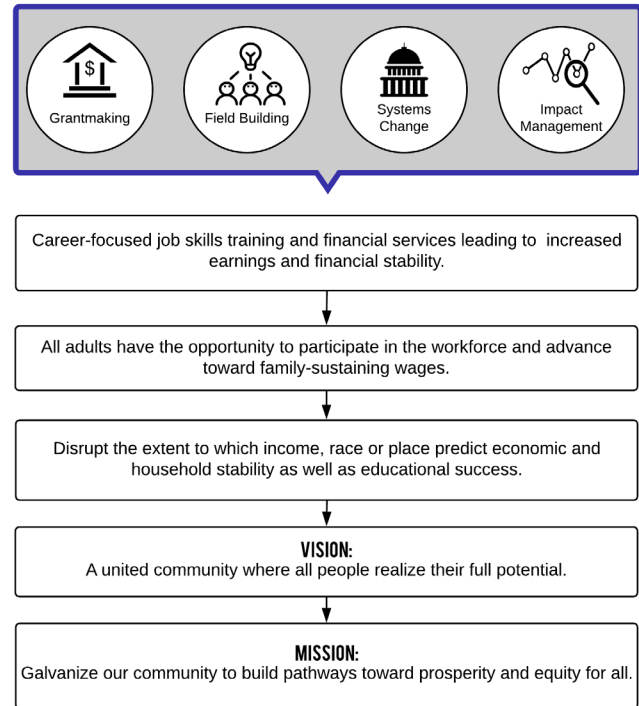


MISSION:
Galvanize our community to build pathways toward prosperity and equity for all.

EDUCATIONAL SUCCESS



ECONOMIC OPPORTUNITY



HOUSEHOLD STABILITY

